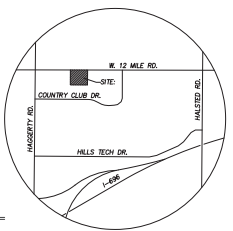
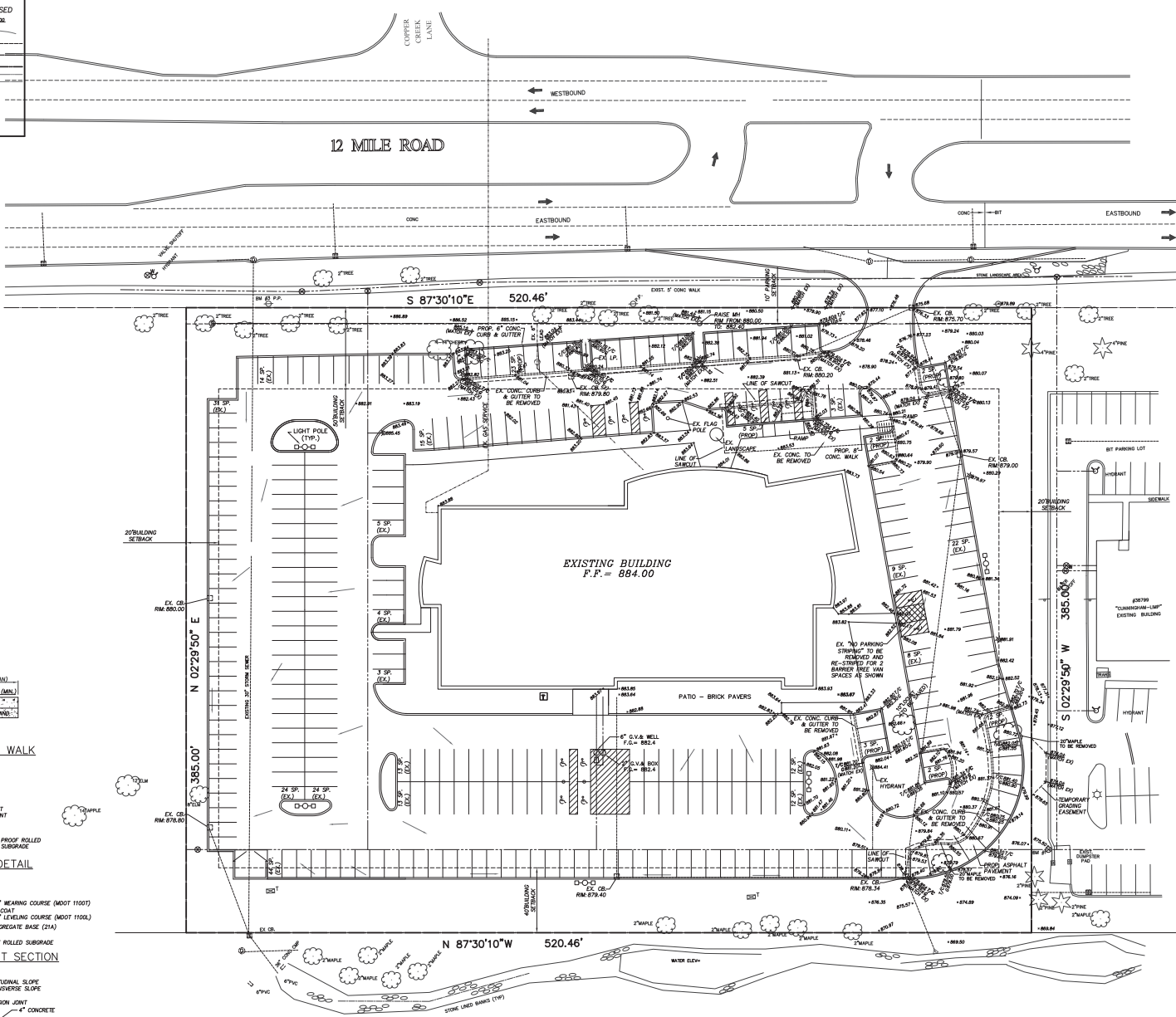


EXISTING		PROPOSED	
—	ELEVATION	—	CONTOUR
—	CONTOUR	—	CONTOUR
—	STORM SEWER	—	STORM SEWER
—	SEWER	—	SEWER
—	WATER MAIN	—	WATER MAIN
—	GAS	—	GAS
—	ELECTRICAL	—	ELECTRICAL
□	STATION	□	STATION
○	MANHOLE	○	MANHOLE
○	GATE VALVE IN MANHOLE	○	GATE VALVE IN MANHOLE
□	HYDRANT	□	HYDRANT



**LOCATION MAP**  
NO SCALE



CLIENT  
**NORTHERN EQUITIES GROUP**

PROJECT TITLE  
**HARMAN BECKER**

39000 COUNTRY CLUB DR.  
FARMINGTON HILLS, MI 48331

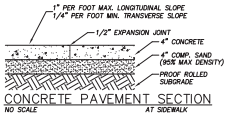
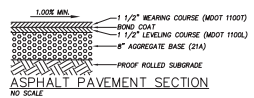
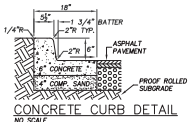
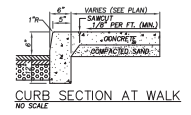
SHEET TITLE  
**SITE PLAN**

DATE ISSUED FOR REVIEW: 05/27/2016  
DATE REVISION: 05/27/2016  
DATE REVISION: 05/27/2016

SHEET NO.

**SP-1**

PROJECT NO.  
12-565



SITE DATA:  
BUILDING = 85,000 S.F.  
ZONING: SITE: OS-4 OFFICE RESEARCH DISTRICT  
SITE AREA: 4.6 ACRES 200,577 SF  
PROPOSED DISTURBANCE = 15,975 SF. (8% OF LOT)  
REQUIRED PARKING:  
1 SPACE / 250 SF. FOR FIRST 15,000 SF.  
= 65 SPACES  
1 SPACE / 250 SF. AFTER 15,000 SF.  
= 180 SPACES  
248 SPACES TOTAL  
PROVIDED PARKING:  
307 SPACES (INCLUDING 13 BARRIER SPACES)



SCALE: 1" = 30'

**LEGAL DESCRIPTION**

THE WEST 170.00 FEET OF LOT 3, ALL OF LOT 2, AND THE EAST 50.46 FEET OF LOT 1, "COUNTRY CLUB CORPORATE PARK," A SUBDIVISION OF PART OF THE NORTHWEST 1/4 & PART OF THE NORTHWEST 1/4 OF SEC. 18, T.5N, R.16E, CITY OF FARMINGTON HILLS, OAKLAND COUNTY, MICHIGAN, RECORDED IN LIBER 218 OF PLATS, PAGES 26, 28 & 29, & IN OAKLAND COUNTY RECORDS, ALL OF THE ABOVE CONTAINING 200.754 SQUARE FEET OR 4,630 ACRES, ALL OF THE ABOVE BEING SUBJECT TO ALL EASEMENTS, RESTRICTIONS, AND RIGHT-OF-WAYS OF RECORD.



STATE OF MICHIGAN  
MATTHEW J. ALTON  
LICENSE NO. 405248  
EXPIRES 12/31/2017



STATE OF MICHIGAN  
MATTHEW J. ALTON  
LICENSE NO. 405248  
EXPIRES 12/31/2017