

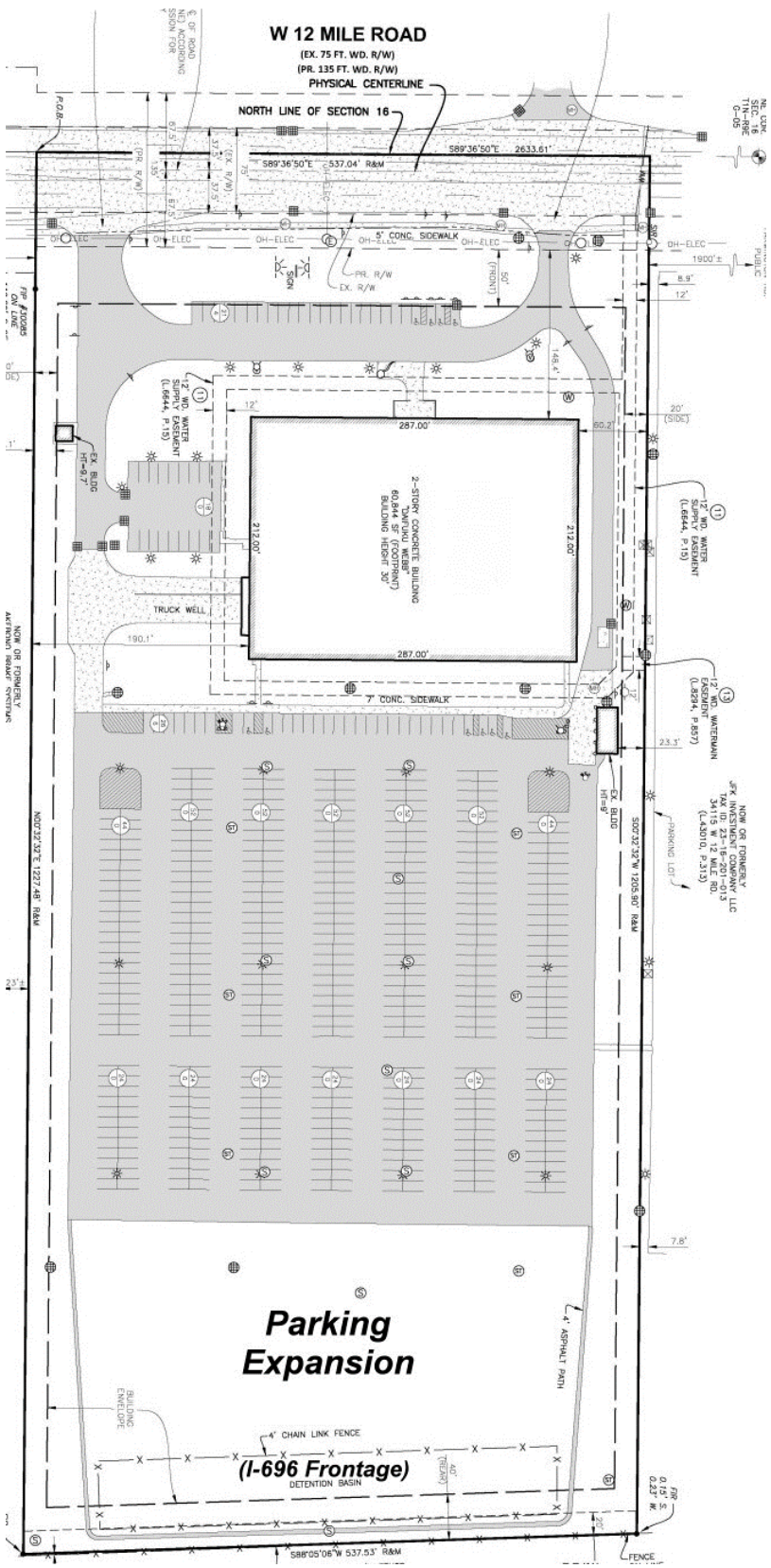
W 12 MILE ROAD

(EX. 75 FT. WD. R/W)

(PR. 135 FT. WD. R/W)

PHYSICAL CENTERLINE

NORTH LINE OF SECTION 16



Parking Expansion

(1-696 Frontage)
DETENTION BASIN

NOW OR FORMERLY
JFK INVESTMENT COMPANY LLC
34115 W 12 MILE RD
(L-43010, P.115)

NOW OR FORMERLY
AMERICAN ROAD SERVICES